



# 100% EFFICIENT ELECTRIC BOILERS



## ELECTRO'S INDUSTRIAL BOILER UP TO 300 kW

### COMPACT QUALITY

Our Industrial electric hot water boilers are engineered to meet the global demand for safe, clean and less carbon intensive electric heating systems. This quality built, compact electric boiler can handle big or small applications from heating a large hotel to sidewalk snowmelt systems.



Call Today

**800.922.4138**

FAX: 763.295.4434



2150 West River St.  
Monticello, MN 55362



sales@electromn.com

[www.electromn.com](http://www.electromn.com)





# APPLICATIONS

Radiant Floor Heat | Snowmelt | Geothermal Re-Heat | Food Processing

Electro Industries' Industrial Boiler is a very compact and effective solution for applications requiring up to 300 kW or 1 million BTU's. With a 30" wide and 56" high profile, our Industrial Boiler will fit through most service doors and requires less floor space, making it perfect for small mechanical rooms and limited access locations.

Need more BTU's? With built-in lead-lag control, you can connect two of our Industrial Boilers

together to operate as one. Digital temperature control provides automatic turn down as loads decrease, and provides the exact water temperature required for your application.

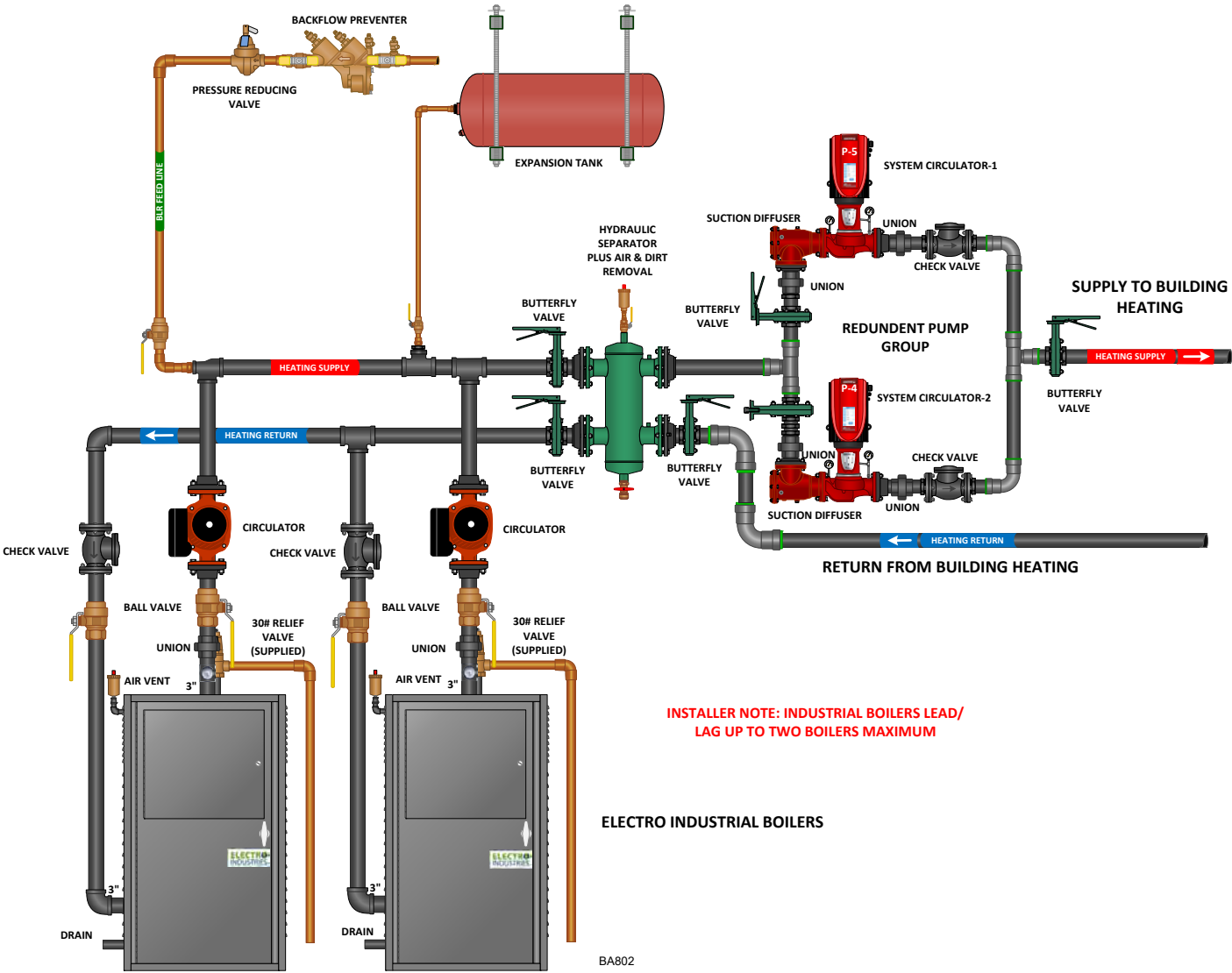
Backed by an industry leading warranty, the Electro Industrial Boiler is the clear choice for commercial applications.

## FEATURES

- Digital display for setup and monitoring
- Water temperature set point control
- Outdoor reset
- Lead-lag control for multi-boiler applications
- Remote shutdown and utility load control options
- Low water cutoff
- Manual hi-limit control
- 208, 240, 480, 600-volt 3-phase
- 120V operating control circuit
- ASME stamped vessel (built in accordance to ASME Section IV)
- Conforms to CSD-1
- 1-year element warranty
- 5-year vessel warranty



# TYPICAL PIPING



# SPECIFICATIONS

Model	Volts 3-Phase	kW	Btu/h Output	Total Amps	Boiler Weight (LBS)
EB-NB-***-208	208	60 to 180	204,728 to 614,185	166.5 to 449.6	680 to 720
EB-NB-***-240	240	60 to 180	204,728 to 614,185	144.3 to 433.0	680 to 720
EB-NB-***-480	480	60 to 300	204,728 to 1,023,642	72.2 to 360.8	685 to 735
EB-NB-***-600	600	60 to 300	204,728 to 1,023,642	57.7 to 288.7	685 to 735

\*Request document BL803 for complete model list and specifications.

# ELECTRO INDUSTRIES

Changing the way you think about  
**ELECTRIC HEATING  
TECHNOLOGY**

To locate a contractor  
or distributor in your  
area, visit our website  
and click on Dealer  
Finder.

ELECTRO   
INDUSTRIES



Call Today

**800.922.4138**

FAX: 763.295.4434



2150 West River St.  
Monticello, MN 55362



[sales@electromn.com](mailto:sales@electromn.com)

[www.electromn.com](http://www.electromn.com)



Rev 03/12/2024 - BL801