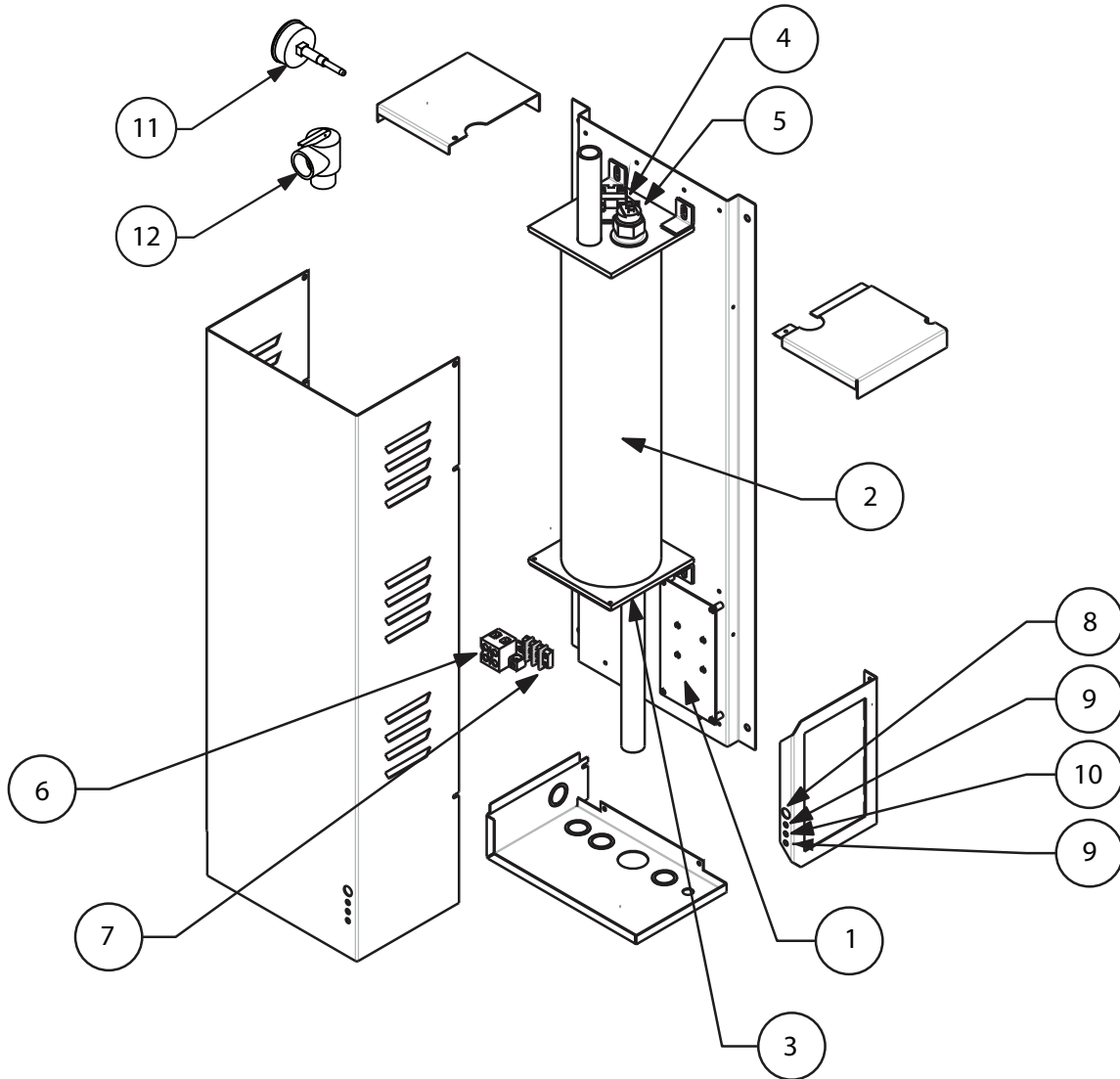


Mini-Boiler™ EMB-* Series



ART-181 1.0

| Replacement Part # | Description | |
|--------------------|-------------|-----------------------------------|
| EMB-2 | | |
| 1 | EMB15620 | Control Board |
| 2 | EMBVS2 | 2.5 kW Vessel Assembly |
| 3 | EB5523 | 2.5 kW Element with Gasket (120V) |
| EMB-4 | | |
| 1 | EMB15620 | Control Board |
| 2 | EMBVS4 | 4 kW Vessel Assembly |
| 3 | EB5523 | 2.5 kW Element with Gasket |
| EMB-5 | | |
| 1 | EMB5620 | Control Board |
| 2 | EMBVS1AND5 | 1 and 5 kW Vessel Assembly |
| 3 | EB5520 | 4.5 kW Element with Gasket |
| EMB-9 | | |
| 1 | EMB5620 | Control Board |
| 2 | EMBVS9 | 9 kW Vessel Assembly |
| 3 | EB5520 | 4.5 kW Element with Gasket |

| Replacement Part # | Description | |
|--|-------------|---------------------------------------|
| Common Parts for the EMB-* Series | | |
| 4 | 5535 | 205° Manual Reset Limit |
| 5 | 5538G | 160° Auto Reset Limit |
| 6 | 6636 | Terminal Block |
| 7 | 2232 | Pump Terminal Block |
| 8 | ULAMP2283 | Red Indicator Light |
| 9 | ULAMP2287 | Red Panel Mount LED |
| 10 | ULAMP2286 | Amber Panel Mount LED |
| 11 | 5456A | Pressure / Temperature Gauge |
| 12 | 5453 | 30 psi Relief Valve |
| 13 | XBSH7125 | 3/4" x 1/4" Pipe Bushing (Not Shown) |
| 14 | XEL7800 | 3/4" Pipe Elbow (Not Shown) |
| 15 | XNPL7300 | 3/4" x 2 1/2" Pipe Nipple (Not Shown) |
| 16 | XTEE7000 | 3/4" Pipe Tee (Not Shown) |
| 17 | UFUSE0440 | 2-Amp Fast Blow Fuse (Not Shown) |