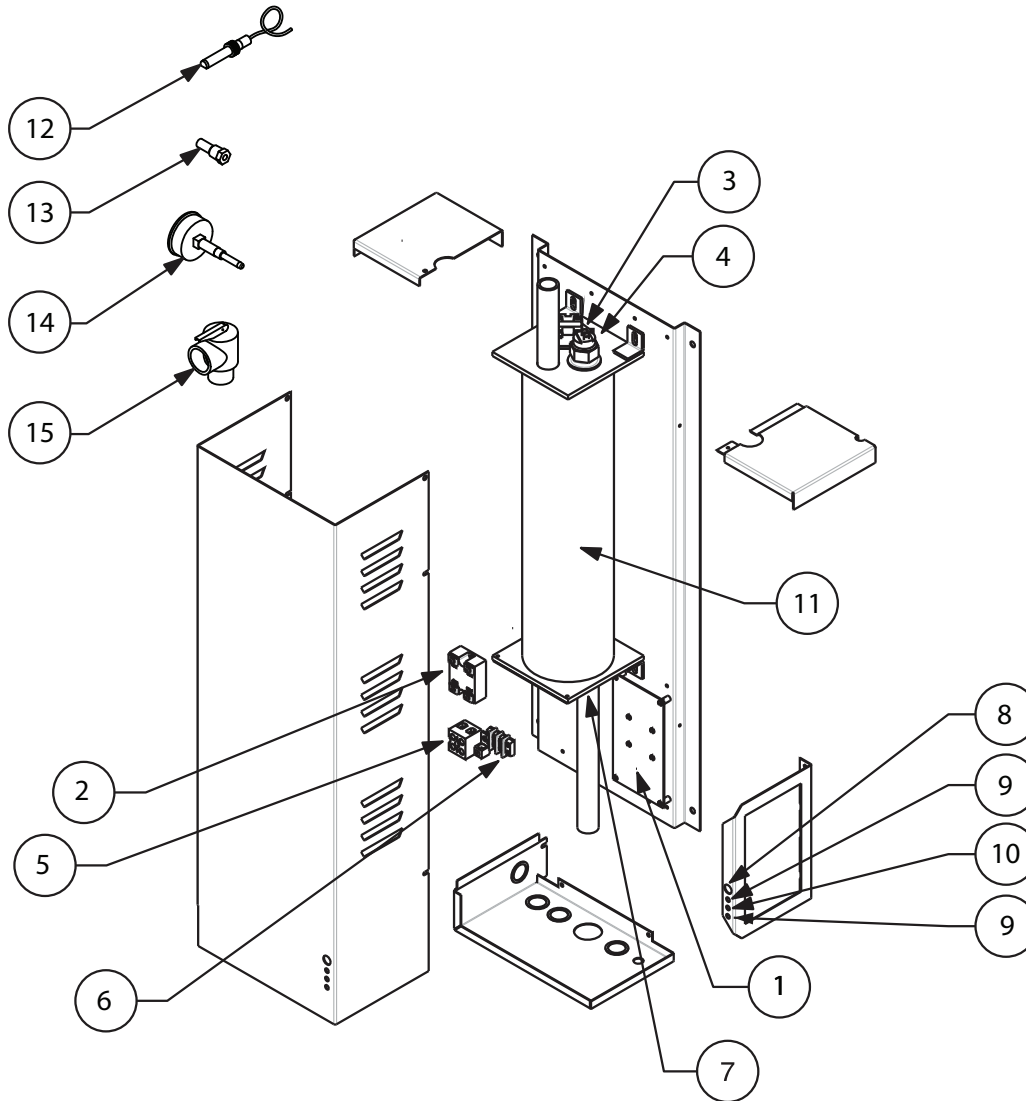


WarmFlo® Mini-Boiler™

EMB-W-9



ART-182 1.0

Replacement Part #	Description	
1	EMB5621	Control Board
1a	UIC9769 R-065	Microchip v. 13.2* (Specify Code – A)
1b	UIC9267 R-101	Microchip v. 3.1* (Specify Code – A.)
1	WFCD25605	Control Board
2	4037KIT	50-Amp AC Triac Kit
3	5535	205° Manual Reset Limit
4	5538G	160° Auto Reset Limit
5	6636	Terminal Block
6	2232	Pump Terminal Block
7	EB5520	4.5 kW Element with Gasket
8	ULAMP2283	Red Indicator Light
9	ULAMP2287	Red Panel Mount LED
10	ULAMP2286	Amber Panel Mount LED

Replacement Part #	Description	
11	EMBVS9	9 kW Vessel Assembly
12	WFSB	Supply Sensor ("E" Sensor)
12	WFSST10FT	Supply Sensor ("D" Sensor) – Chip date before July 2004
13	[EBTB5533	Sensor Well
14	5456A	Pressure / Temperature Gauge
15	5453	30 psi Relief Valve
16	XBSH7125	3/4" x 1/4" Pipe Bushing (<i>Not Shown</i>)
17	XEL7800	3/4" Pipe Elbow (<i>Not Shown</i>)
18	XNPL7300	3/4" x 2 1/2" Pipe Nipple (<i>Not Shown</i>)
19	XTEE7000	3/4" Pipe Tee (<i>Not Shown</i>)
20	XTEE7050	3/4" Pipe Cross (<i>Not Shown</i>)
21	UFUSE0440	2-Amp Fast Blow Fuse (<i>Not Shown</i>)