

Zone Controller – Add-On Zones

EB-ZTS-2

Reference Master Zone Controller Board, EB-ZTS-1 or EB-Z2P

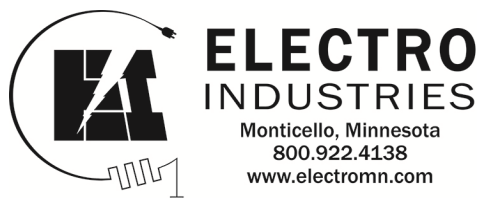
This add-on zone controller is for larger systems and represents a second board which acts as a “slave” to the main zone controller EB-ZTS-1 or EB-Z2P installed within the TS boiler. This combination provides connections for up to 8 active zones. All functions of the “master” EB-ZTS-1 or EB-Z2P remain the same, this is simply an add-on 4 zones which function similarly to zones 2, 3, and 4.

Features and configuration are the same as EB-ZTS-1 or EB-Z2P and it is assumed the installer is familiar with the TS boiler zone controller system.

Note: This zone controller is not compatible with power robbing thermostats.

Note: Capacity dial switches must be set during installation.

Drawings: **BH016**
XX017



Installation/Hookup

1. Mount enclosure in a convenient location between the boiler/zone valves. Slab stats (temperature controlling thermostat) are wired at the bottom and zone valves are wired at the top.
2. **Transformer power** – internal transformer has primary taps for 120, 208, 240 volts, 60 hertz, single phase. Route appropriate source to left compartment and connect to transformer wires. Cap off the unused transformer wires.
 - a. 120 – black and white.
 - b. 208 – black and blue.
 - c. 240 – black and red.
3. Connect slab stat or temperature sensing **thermostat** to the bottom terminal block “R and W” as shown on drawing BH016. If using Electro-Stat, a common is required at each Electro-Stat. Common is available at the lower right terminal block. Drawing shows typical hookups for various thermostats. Connect per your selected thermostat.
4. Zone valve sizing/priority – actually there is no such thing as a priority associated with the 2 through 8 zones, but the system will function better if the smaller zones are connected to this “slave” controller. If you have a choice, the largest zone would be number 1 on the master board and then simply work your way down.

Note: When using this “slave” controller associated with one of the pump loops with pump zone controller EB-Z2P, see drawing BH017 page 4 with the pump controller showing the hookup wiring.
5. **Zone valves** are connected at the top terminal block. Terminals 1 and 2 represent the zone valve motor and terminals 3 and 4 represent the zone valve end switch contact. Again, the drawing shows three zone valve types, hookup per your selected type. Notice drawing Note 3, if you’re using priority you must use a zone valve component with separate end switch contact.
6. The zone controller board turns on the boiler with the W OUT tab. On the right side of the zone board route a wire from the W OUT to the boiler W stat terminal. Route a second wire from the controller C tab to the boiler C terminal block so that both units are at the same common reference.

Thermostat Heat Anticipator Setting

The two thermostat screw terminal contacts pass through to the zone valve motor terminals. Therefore, the thermostat loading is the zone valve motor. Set the anticipator to match the zone valve motor current. If Honeywell V8043-**** zone valve, set to 0.4.

Power robbing thermostat comment: This zone controller is not compatible with power robbing thermostats.

Zone Valve Power

This unit has a 40VA transformer which should be adequate for four zone valves (assuming 9VA each). There is control cable logic isolation between the two boards, but do not cross or mix 24 volts between this slave board and the boiler transformer/master zone board.

Circulator Pump Information

The main pump must be wired and operated associated with the boiler itself. This zone controller has no direct provision for connecting circulator pumps.

If you have a zoning arrangement where there is more than pump and various sets of zone valves tied to each pump, you can wire the pump for this zone controller branch from the pump relay on this controller board. Drawing BH015 shows pump connected to the pump relay on this board.

Options

ZONE PUMPS – add switching relay EE-5051 to each zone valve terminal block, request drawing BH012.

Setup – Zone Sizes and Boiler Stage Sizes

On the zone valve controller board there are four dial switches. From building design information and/or zone capacity calculations, installer must know the approximate BTUH capacity of each zone. Dial in this capacity for each zone:

- 0 = 15,000 BTUH
- 1 = 30,000 BTUH
- 2 = 45,000 BTUH
- 3 = 60,000 BTUH

Monitor LED's

- Power on – green LED represents good fuse and 24-volt transformer source.
- Slab stat or temperature sensing thermostat inputs – illuminates with voltage at “W”.
- Zone valve – illuminates with appropriate stat heat call **and** an end switch contact between 3 and 4.

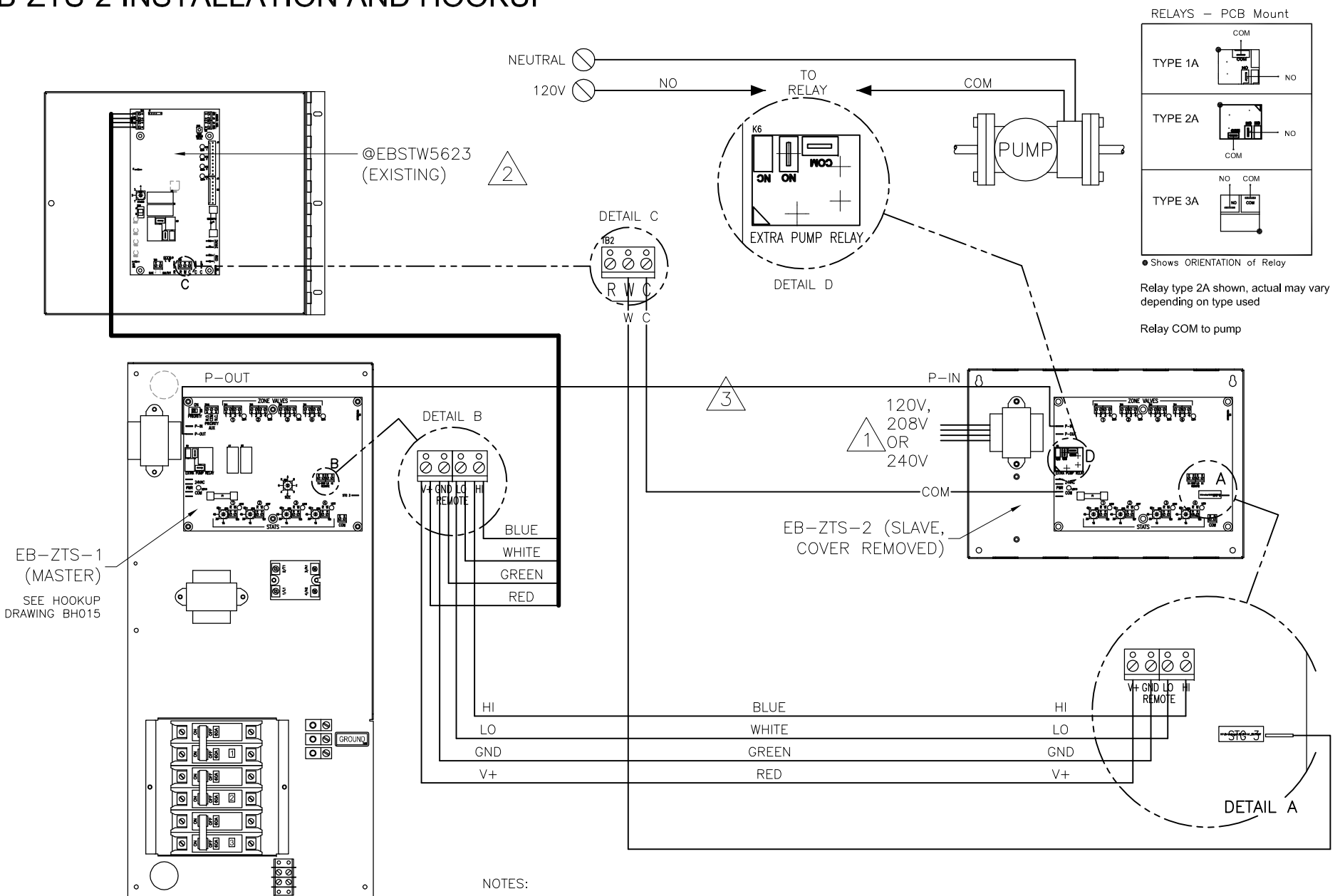
Fuse

Protects this board and all external field connections/wiring. Replace with 2-amp, fast blow, AGC2.

Staging

This “slave” board sends capacity information to the master board. The master board uses the zone sizing (Btu capacity) information to determine which stages should be active within the main boiler. In other words, this is simply an extension of the four zones on the master board and the staging calculations are summed from all zones (1-8) that may be active at any one time.

EB-ZTS-2 INSTALLATION AND HOOKUP



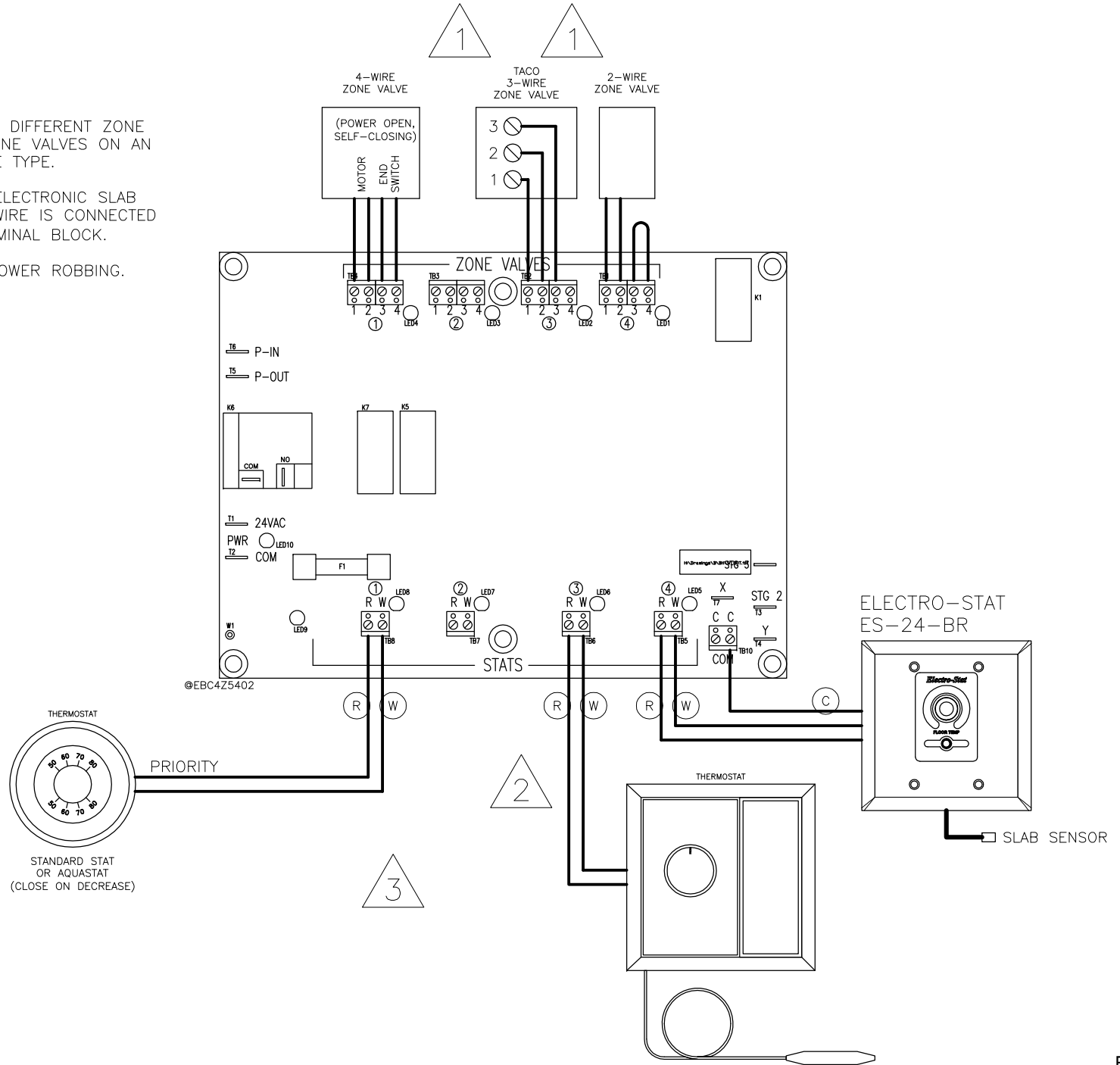
FOUR-ZONE HOOKUP

NOTES:

1 SHOWN IS HOOK-UP FOR 3 DIFFERENT ZONE VALVE TYPES. TYPICALLY ALL ZONE VALVES ON AN INSTALLATION WILL BE THE SAME TYPE.

2 BASIC STAT SHOWN, SOME ELECTRONIC SLAB STATS MAY BE 3-WIRE. THIRD WIRE IS CONNECTED TO THE "SYSTEM COMMON" TERMINAL BLOCK.

3 THERMOSTATS CAN NOT BE POWER ROBBING.



Electro Industries, Inc. Residential Limited Product Warranty

Effective November 1, 2009

Electro Industries, Inc. warrants to the original owner, at the original installation site, for a period of two (2) years from date of original purchase, that the product and product parts manufactured by Electro Industries, Inc. are free from manufacturing defects in materials and workmanship, when used under normal conditions and when such product has not been modified or changed in any manner after leaving the plant of Electro Industries, Inc. If any product or product parts manufactured by Electro Industries, Inc. are found to have manufacturing defects in materials or workmanship, such will be repaired or replaced by Electro Industries, Inc. Electro Industries, Inc., shall have the opportunity to directly, or through its authorized representative, examine and inspect the alleged defective product or product parts. Electro Industries, Inc. may request that the materials be returned to Electro Industries, Inc. at owner's expense for factory inspection. The determination as to whether product or product parts shall be repaired, or in the alternative, replaced, shall be made by Electro Industries, Inc. or its authorized representative.

Electro Industries, Inc. will cover labor costs according to the Repair / Replacement Labor Allowance Schedule for a period of ninety (90) days from the date of original purchase, to the original owner, at the original installation site. The Repair / Replacement Labor Allowance is designed to reduce the cost of repairs. This Repair / Replacement Labor Allowance may not cover the entire labor fee charged by your dealer / contractor.

TWENTY YEAR (20) LIMITED WARRANTY ON BOILER ELEMENTS AND VESSELS

Electro Industries, Inc. warrants that the boiler elements and vessels of its products are free from defects in materials and workmanship through the twentieth year following date of original purchase. If any boiler elements or vessels are found to have a manufacturing defect in materials or workmanship, Electro Industries, Inc. will replace them.

TWENTY YEAR (20) LIMITED WARRANTY ON SPIN FIN ELEMENTS

Electro Industries, Inc. warrants that the spin fin elements of its products are free from defects in materials and workmanship through the twentieth year following date of original purchase. If any spin fin elements are found to have a manufacturing defect in materials or workmanship, Electro Industries, Inc. will replace them.

FIVE YEAR (5) LIMITED WARRANTY ON OPEN WIRE ELEMENTS

Electro Industries, Inc. warrants that the open wire elements of its products are free from defects in materials and workmanship through the fifth year following date of original purchase. If any open wire elements are found to have a manufacturing defect in materials or workmanship, Electro Industries, Inc. will replace them.



**ELECTRO
INDUSTRIES**

Monticello, Minnesota
800.922.4138
www.electromn.com

THESE WARRANTIES DO NOT COVER:

1. Costs for labor for removal and reinstallation of an alleged defective product or product parts, transportation to Electro Industries, and any other materials necessary to perform the exchange, except as stated in this warranty. Replacement material will be invoiced to the distributor in the usual manner and will be subject to adjustment upon verification of defect.
2. Any product that has been damaged as a result of being improperly serviced or operated, including, but not limited to, the following: operated with insufficient water or airflow, allowed to freeze, subjected to flood conditions, subjected to improper voltages or power supplies, operated with airflow or water conditions and/or fuels or additives which cause unusual deposits or corrosion in or on the product, chemical or galvanic erosion, improper maintenance or subject to any other abuse or negligence.
3. Any product that has been damaged as a result of natural disasters, including, but not limited to, the following: lightning, fire, earthquake, hurricanes, tornadoes or floods.
4. Any product that has been damaged as a result of shipment or handling by the freight carrier. It is the receiver's responsibility to claim and process freight damage with the carrier.
5. Any product that has been defaced, abused, or suffered unusual wear and tear as determined by Electro Industries or its authorized representative.
6. Workmanship of any installer of the product. This warranty does not assume any liability of any nature for unsatisfactory performance caused by improper installation.
7. Transportation charges for any replacement part or component, service calls, normal maintenance; replacement of fuses, filters, refrigerant, etc.

CONDITIONS AND LIMITATIONS:

1. If at the time of a request for service the original owner cannot provide an original sales receipt or a warranty card registration then the warranty period for the product will have deemed to begin thirty (30) days after the date of manufacture and **NOT** the date of installation.
2. The product must have been sold and installed by a licensed electrical contractor, a licensed plumbing contractor, or a licensed heating contractor.
3. The application and installation of the product must be in compliance with Electro Industries' specifications as stated in the installation and instruction manual, and all state and federal codes and statutes. If not, the warranty will be null and void.
4. The purchaser shall have maintained the product in accordance with the manual that accompanies the unit. Annually, a qualified and licensed contractor must inspect the product to assure it is in proper working condition.
5. All related heating components must be maintained in good operating condition.
6. All lines must be checked to confirm that all condensation drains properly from the unit.
7. Replacement of a product or product part under this limited warranty does not extend the warranty term or period.
8. Replacement product parts are warranted to be free from defects in material and workmanship for ninety (90) days from the date of installation. All exclusions, conditions, and limitations expressed in this warranty apply.
9. Before warranty claims will be honored, Electro Industries shall have the opportunity to directly, or through its authorized representative, examine and inspect the alleged defective product or product parts. Remedies under this warranty are limited to repairing or replacing alleged defective product or product parts. The decision whether to repair or, in the alternative replace, products or product parts shall be made by Electro Industries or its authorized representative.

THESE WARRANTIES DO NOT EXTEND TO ANYONE EXCEPT THE ORIGINAL PURCHASER AT RETAIL AND ONLY WHEN THE PRODUCT IS IN THE ORIGINAL INSTALLATION SITE. THE REMEDIES SET FORTH HEREIN ARE EXCLUSIVE.

ALL IMPLIED WARRANTIES, INCLUDING WARRANTIES OF MERCHANTABILITY AND FITNESS FOR A PARTICULAR PURPOSE, ARE HEREBY DISCLAIMED WITH RESPECT TO ALL PURCHASERS OR OWNERS. ELECTRO INDUSTRIES, INC. IS NOT BOUND BY PROMISES MADE BY OTHERS BEYOND THE TERMS OF THESE WARRANTIES. FAILURE TO RETURN THE WARRANTY CARD SHALL HAVE NO EFFECT ON THE DISCLAIMER OF THESE IMPLIED WARRANTIES.

ALL EXPRESS WARRANTIES SHALL BE LIMITED TO THE DURATION OF THIS EXPRESS LIMITED WARRANTIES SET FORTH HEREIN AND EXCLUDE ANY LIABILITY FOR CONSEQUENTIAL OR INCIDENTAL DAMAGES RESULTING FROM THE BREACH THEREOF. SOME STATES DO NOT ALLOW THE EXCLUSION OR LIMITATION OF INCIDENTAL OR CONSEQUENTIAL DAMAGES, SO THE ABOVE LIMITATIONS OR EXCLUSIONS MAY NOT APPLY. PRODUCTS OR PARTS OF OTHER MANUFACTURERS ATTACHED ARE SPECIFICALLY EXCLUDED FROM THE WARRANTY.

THIS WARRANTY GIVES YOU SPECIFIC LEGAL RIGHTS, AND YOU MAY HAVE OTHER RIGHTS WHICH VARY UNDER THE LAWS OF EACH STATE. IF ANY PROVISION OF THIS WARRANTY IS PROHIBITED OR INVALID UNDER APPLICABLE STATE LAW, THAT PROVISION SHALL BE INEFFECTIVE TO THE EXTENT OF THE PROHIBITION OR INVALIDITY WITHOUT INVALIDATING THE REMAINDER OF THE AFFECTED PROVISION OR THE OTHER PROVISIONS OF THIS WARRANTY.