

WarmFlo® Select – Adding 5 kW EM-SL30-KIT

This is basically the EM-II05158 insert with an extra stage 4 operating relay and necessary instructions.

Install the EM-II05158 5 kW insert directly above main Electro-Mate. The cabinet or control box section of this 5 kW insert must be “furred out” so that the elements line up with the main Electro-Mate.

Airflow – this combination is now 30 kW and if used in conjunction with air source heat pump the WarmFlo Select plenum heater incoming air may be as much as 100° F. The furnace for this combination must have 2000 CFM, minimum (actual). This added 5 kW activates (5 kW + 7.5 kW = 12.5 kW, stage 4) with electric heat stage 4, thus if stage 4 comes on with the heat pump or in warmer conditions, it could easily overheat.

- Suggestion – the WarmFlo Analyzer allows disabling stages, suggest stage 4 be changed to only come on below perhaps 20° F.

Required plenum space/height – since this added 5 kW goes above the main unit, at least 15” vertical height is required.

15” wide WarmFlo Select models – this added 5 kW can only be used with 18” wide models (last digit “8”).

Plenum deflectors or baffling – same rules apply; all available blower or furnace air must pass through the electric elements.

Electrical Hookup/Wiring

1. Locate K7 electric element relay within the WarmFlo Select enclosure. This will have a violet and yellow/green wire connected to its coil.
2. Mount the small relay supplied with this kit at some convenient spot somewhat adjacent to K7 (step 1 above).
3. Remove K7 coil wires and cut off the push-on’s, strip.
4. The wires provided connect coils of the added relay (step 1) and K7. Wire nut the stub wire and step 3 wire.
5. The EM-II05158 has a 4-wire cable, two series the hi-limit loop.

WF Board, lower Left	New Relay, NO Contact	EM-II	Hi-Limit Probe, Cut One Red
R	Red		
C		Gray	
	Orange	Orange	
		Red/white	Red
		Red/white	Red

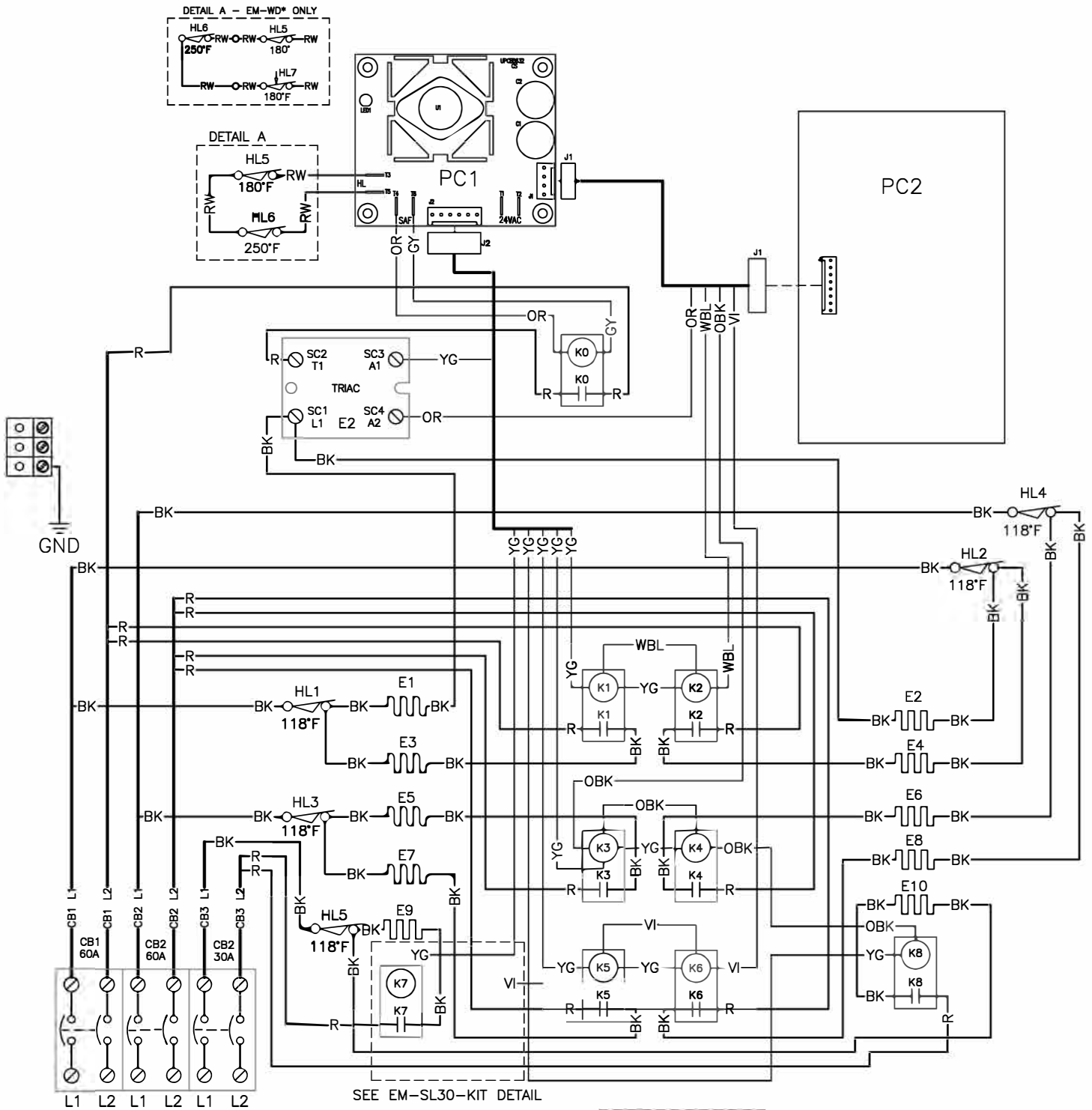
240-Volt Power Wiring

The EM-II05158 requires a separate 30-amp circuit directly to the terminal block within the EM-II05158.

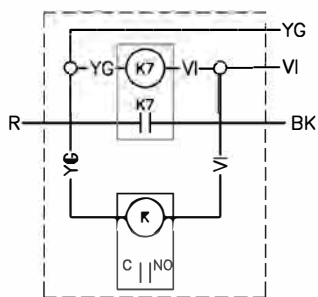
Note: Some local codes may require a circuit breaker or fuse/disconnect adjacent to the EM-II05158. This will depend upon the position of the distribution panel related to this furnace installation.

Drawings included: **EH713**





SEE EM-SL30-KIT DETAIL



EM-SL30-KIT

⚠ CUT EXISTING VIOLET & GREEN/YELLOW WIRES. CONNECT TO PROVIDED WIRES IN EM-SL30-KIT.

Rev D 1-16-18: 5128 to 5128C, add (2) YSC2780 relay screws
 Rev. C 12-10-12: HL5 Temp was 190°F; HL7 Temp was 170°F
 Rev. B 06-10-09: Added Notes To Sheet 2 Per Production Markup.
 Rev. A 10-24-08: Released For Production.

PROPRIETARY AND CONFIDENTIAL NOTE: THE INFORMATION CONTAINED IN THIS DRAWING IS THE SOLE PROPERTY OF ELECTRO INDUSTRIES INC. ANY REPRODUCTION IN PART OR AS A WHOLE WITHOUT THE WRITTEN PERMISSION OF ELECTRO INDUSTRIES INC. IS PROHIBITED.	DESCRIPTION	ELECTRO INDUSTRIES, INC. MONTICELLO, MN 55362	SHEET	SCALE	PART/MODEL NUMBER
	EM SELECT 30kW Conversion Kit		1/2	NTS	EM-SL30-KIT
	DRAWN	CHECKED	APPROVED	DATE	REV/STATUS
	JAD			12-10-12	D
					DOCUMENT NUMBER
					EH713

QTY.	WIRE#	GAUGE	COLOR	LENGTH	COMBO1	END1	STRIP1	STRIP2	END2	COMBO2
	1	18AWG	VIOLET	3.00	-	N/A	0.38	0.38	VAFIT5200	#2
	2	18AWG	VIOLET	6.00	#1	VAFIT5200	0.38	0.25	VAFIT7500	-
	3	18AWG	YEL/GRN	3.00	-	N/A	0.38	0.38	VAFIT5200	#4
	4	18AWG	YEL/GRN	6.00	#3	VAFIT5200	0.38	0.25	VAFIT7500	-
	5	18AWG	RED	36.00	-	VAFIT5100	0.23	0.23	VAFIT5100	-

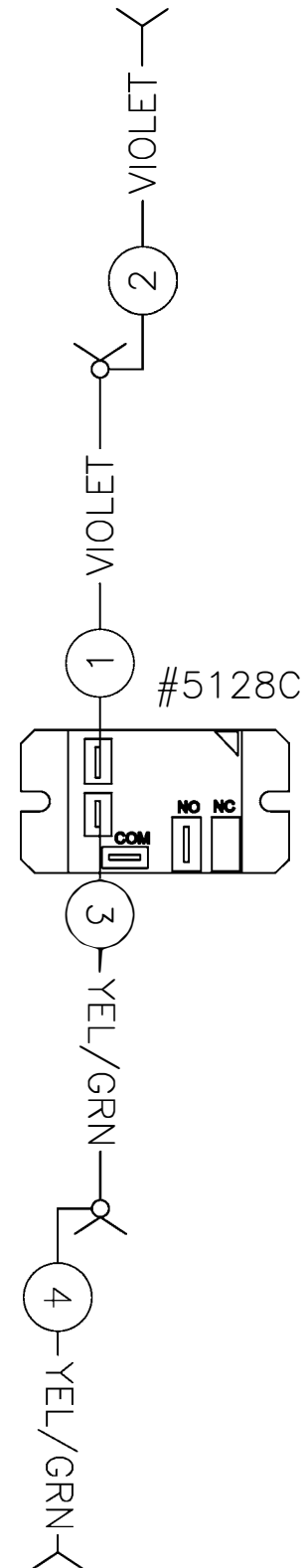
NOTES:

1. CHANGE VANIT2300 ENDS ON ORANGE & GRAY WIRES TO VAFIT5100 ENDS ON EM-II05158.

2. REMOVE VANIT2300 ENDS FROM RED/WHITE WIRES & GIVE A 0.50" STRIP ON EM-II05158.

3. SHIP THE FOLLOWING ITEMS LOOSE WITH KIT:

- (4) WVN5100
- (2) YSC5800
- (1) #5128C
- WIRE #5 (RED 18AWG)
- (2) YSC2780



PROPRIETARY AND CONFIDENTIAL NOTE: THE INFORMATION CONTAINED IN THIS DRAWING IS THE SOLE PROPERTY OF ELECTRO INDUSTRIES INC. ANY REPRODUCTION IN PART OR AS A WHOLE WITHOUT THE WRITTEN PERMISSION OF ELECTRO INDUSTRIES INC. IS PROHIBITED.	DESCRIPTION EM SELECT 30kW Conversion Kit	ELECTRO INDUSTRIES, INC. MONTICELLO, MN 55362	SHEET 2/2	SCALE NTS	PART/MODEL NUMBER EM-SL30-KIT
			DRAWN JAD	CHECKED	APPROVED